

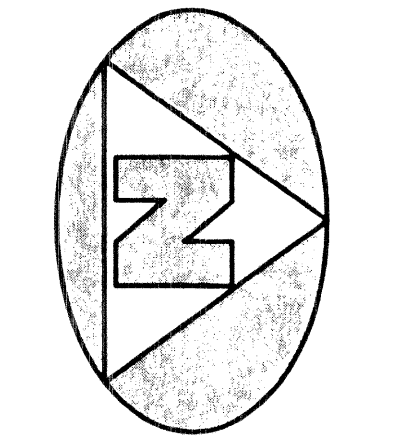
MAY 2004

# BENJAMIN SCHOOL

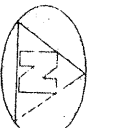
LYING IN THE WEST ONE-HALF OF SECTION 25, TOWNSHIP 41 SOUTH, RANGE 42 EAST, CITY OF PALM BEACH GARDENS, PALM BEACH COUNTY, FLORIDA

SHEET 3 OF 4

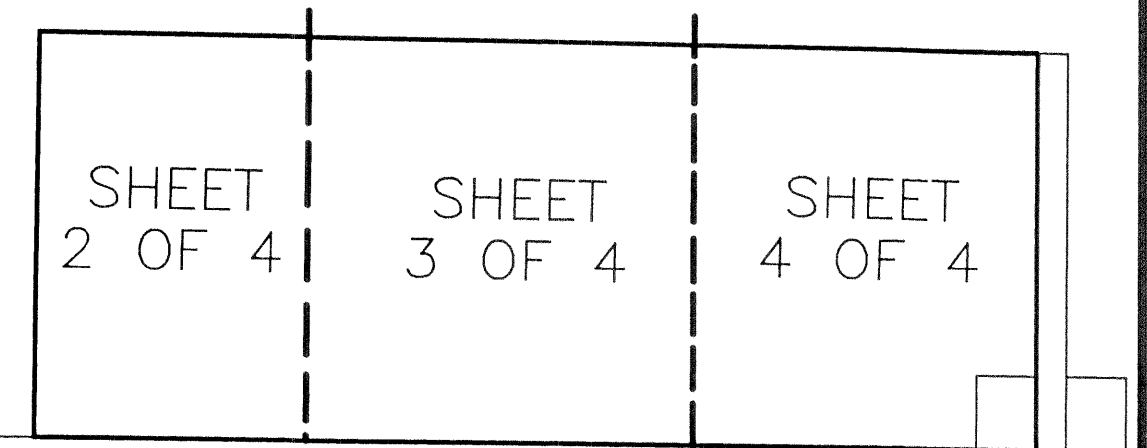
# 134



0 30' 60' 120'  
GRAPHIC SCALE  
(IN FEET)



NOT TO SCALE



CENTRAL BOULEVARD

### SHEET INDEX

### LEGEND:

- (R) DENOTES A RADIAL LINE
- C/L DENOTES A CENTERLINE
- U.E. DENOTES UTILITY EASEMENT
- SUA DENOTES SEACOAST UTILITY AUTHORITY
- R DENOTES RADIUS DISTANCE
- L DENOTES ARC LENGTH DISTANCE
- CA DENOTES CENTRAL ANGLE
- LCB DENOTES LONG CHORD BEARING
- CHD DENOTES CHORD DISTANCE
- ORB DENOTES OFFICIAL RECORDS BOOK
- PB DENOTES PLAT BOOK NUMBER
- PG DENOTES PAGE NUMBER
- PCP DENOTES PERMANENT CONTROL POINT
- PRM DENOTES PERMANENT REFERENCE MONUMENT
- W.L.E. DENOTES WATER LINE EASEMENT
- S.L.E. DENOTES SEWER LINE EASEMENT
- F.P.&L DENOTES FLORIDA POWER & LIGHT
- P.A.E. DENOTES PUBLIC ACCESS EASEMENT
- W.M.M.E. DENOTES WATER MANAGEMENT MAINTENANCE EASEMENT
- DENOTES A SET PERMANENT REFERENCE MONUMENT (LB 2171)
- DENOTES A FOUND PERMANENT REFERENCE MONUMENT (LB 2171)
- ⊙ DENOTES A SET PERMANENT CONTROL POINT (LB 2171)
- DENOTES A FOUND PERMANENT CONTROL POINT (LB 2171)

### SURVEYOR'S NOTES:

1. THE BASE BEARING, AS SHOWN HEREON, IS N01°20'37"E ALONG THE WEST LINE OF THE NORTHWEST ONE-QUARTER OF SECTION 25 AS SHOWN HEREON.
2. IN THOSE INSTANCES WHERE UTILITY OR DRAINAGE STRUCTURES ARE CONSTRUCTED IN CONFLICT WITH THE PLATTED PERMANENT CONTROL POINT POSITION STRADDLERS MONUMENTED AS PERMANENT CONTROL POINTS WILL BE SET TO REFERENCE THE PLATTED POSITION.
3. LINES THAT INTERSECT CURVES ARE NOT RADIAL UNLESS OTHERWISE NOTED.
4. THIS INSTRUMENT WAS PREPARED BY WM. R. VAN CAMPEN, P.S.M. LB 2171, IN AND FOR THE OFFICES OF BENCH MARK LAND SURVEYING & MAPPING, INC., 4152 WEST BLUE HERON BOULEVARD, SUITE 121, RIVIERA BEACH, FLORIDA, 33407

**BENCH MARK LAND SURVEYING & MAPPING, INC.**  
 4152 W. BLUE HERON BOULEVARD • SUITE 121  
 RIVIERA BEACH • FLORIDA 33404  
 PHONE: (561) 848-2102 • LB. 2171 • FAX: (561) 844-9659  
 EMAIL: bmlsm@aol.com WEB: http://members.aol.com/bmlsm

### RECORD PLAT BENJAMIN SCHOOL

DWN	KVC	FB	DATE	10-02-01	WO#	P233
CKD	WVC	FILE	P233PLATN	SCALE	1"=60'	SHEET 3 OF 4

